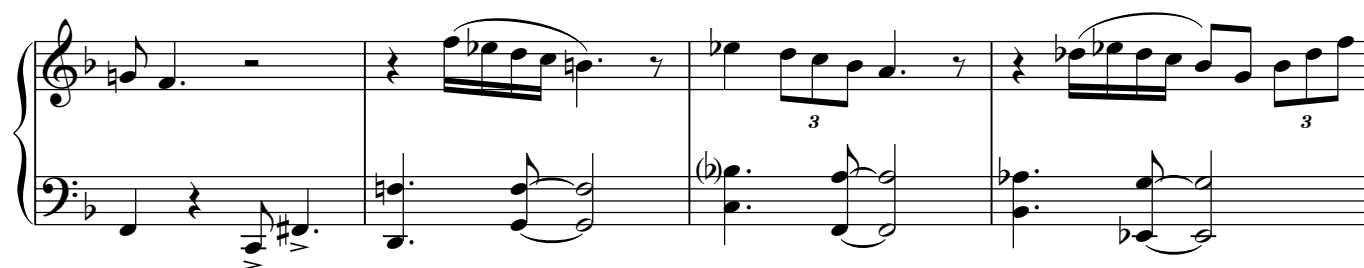
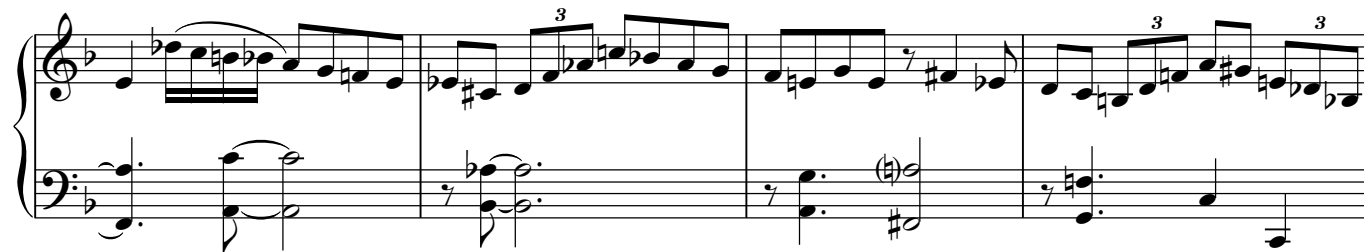
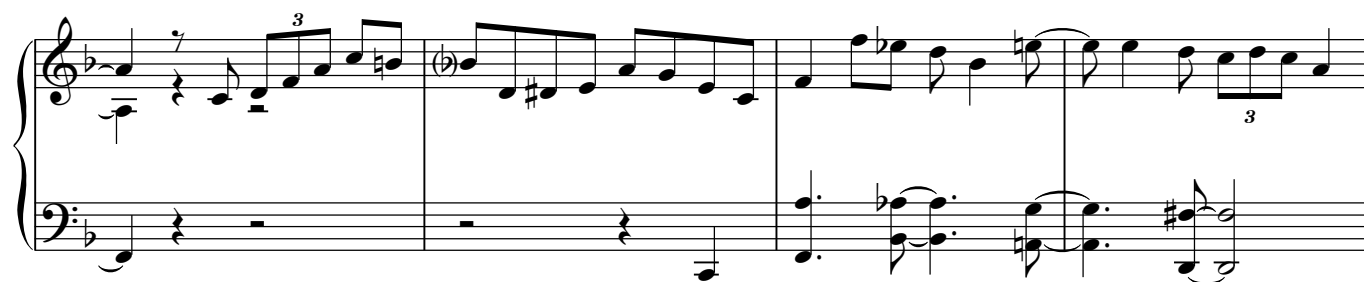


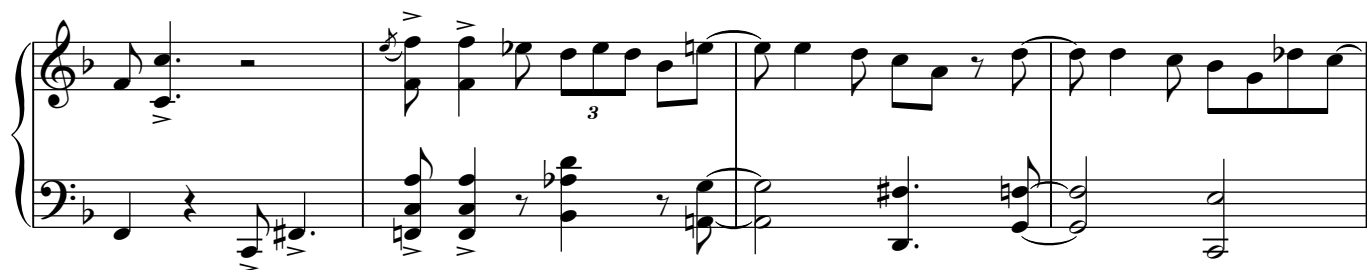
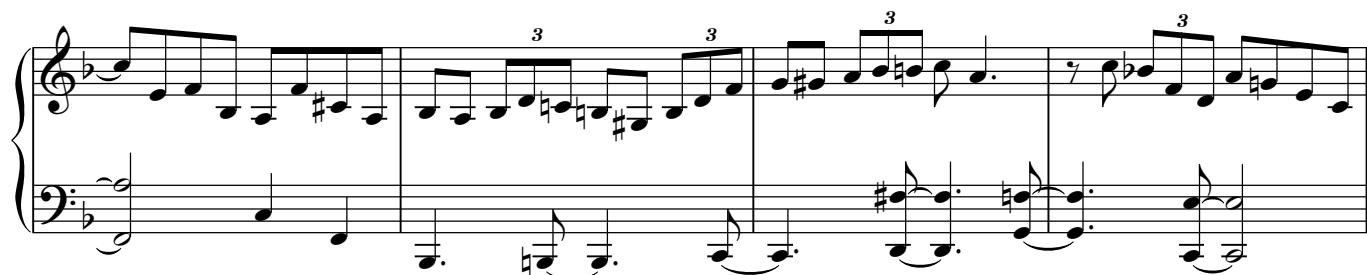
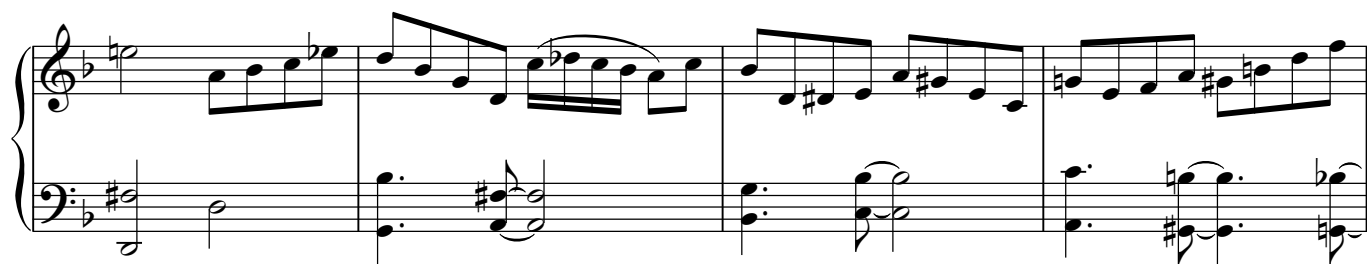
HALLUCINATIONS

Moderato 

B. POWELL

Musical notation for a piano piece in B-flat major, 3/4 time. The score consists of six systems of grand staves. The first system begins with a forte (*f*) dynamic. The music features various rhythmic patterns, including eighth and sixteenth notes, and rests. There are first and second endings marked with "1." and "2.". Trills are indicated by a "tr" symbol. The piece concludes with a repeat sign and a fermata over the final chord.





The image displays a page of musical notation, likely for a piano piece, consisting of six systems of staves. The notation is written in a key signature of one flat (B-flat) and a common time signature (C). The first five systems each consist of a grand staff (treble and bass clefs). The sixth system also consists of a grand staff but includes a repeat sign at the end. The notation includes various musical symbols such as notes, rests, triplets (indicated by a '3' over a group of notes), and dynamic markings like 'ff' (fortissimo). The piece concludes with a double bar line and a repeat sign.